

ANCAP Safety Rating

HYUNDAI i30 HATCH (April 2017 - onwards)



Hyundai i30

This ANCAP safety rating applies to:

Make / Model	Hyundai i30 hatch
Year Range	April 2017 - onwards
Variant(s)*	All hatch variants except i30N
Vehicle Type	Small Car

The tested model of Hyundai i30 hatch was introduced in Australia in April 2017 and New Zealand in July 2017. The ANCAP safety rating for the i30 hatch is based on crash tests of the Hyundai Elantra. ANCAP was provided with technical information which showed that the crash test results of the Elantra apply to the i30 hatch. This ANCAP safety rating applies to all Australian and New Zealand i30 hatch variants except the i30N. Sedan variants of the i30, which launched in October 2020, are not covered by this rating and are currently unrated.

Dual frontal, side chest, side head-protecting airbags (curtains) and a driver knee airbag are standard. Autonomous emergency braking (AEB), lane support systems (LSS) and blind spot monitoring (BSM) are available on some variants and standard on models built from July 2020. A full list of safety features and technologies can be viewed within the *Safety Features & Technologies* table on page 2.

NOTE: In June 2017, ANCAP conducted a frontal offset crash test of a Hyundai i30 for audit test purposes. The audit test score was 14.80 which meets the minimum 5 star eligibility criteria for this test.

Injury Outcomes.

Frontal Offset Driver



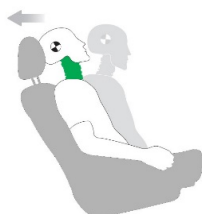
Passenger



Side Impact & Pole# Driver



Whiplash Protection Driver



	GOOD
	ACCEPTABLE
	MARGINAL
	POOR

Head protection only.

Test Results Summary.

Airbags	Dual Frontal, Side, Head, Knee
Frontal Offset Test	14.01 (out of 16)
Side Impact Test	16.00 (out of 16)
Pole Test	2.00 (out of 2)
Whiplash Protection	Good
Pedestrian Protection	Acceptable
ESC	Standard
Seat Belt Reminders	3.00 (out of 3)
Overall Score	35.01 (out of 37)
ANCAP Safety Rating	★★★★★
Rating Year^	2017

Occupant Protection.

Frontal Offset Test

Each body region is scored out of 4 points

Head / neck:	4.00 points
Chest:	3.17 points
Upper legs:	4.00 points
Lower legs:	2.84 points

The passenger compartment held its shape well in the frontal offset test. Pedal and steering wheel displacements were well controlled. Driver and passenger contact with the airbags was stable. All doors remained closed during the crash. After the crash, all doors could be opened with normal effort.

Side Impact Test

Each body region is scored out of 4 points

Head:	4.00 points
Chest:	4.00 points
Abdomen:	4.00 points
Pelvis:	4.00 points

Good protection was provided for the driver in the side impact test. The side airbags performed well.

Pole Test

Scored out of 2 points

The Hyundai i30 has side curtain airbags. Driver head protection was good in this test.

Score:	2.00 points
--------	-------------

Whiplash Protection Test

Whiplash protection is assessed to the RCAR Protocol

Geometric test:	Good
Dynamic test:	Good
Overall whiplash rating:	Good

ANCAP Safety Rating

HYUNDAI i30 HATCH (April 2017 - onwards)



ANCAP

Safety ★★★★★



Pedestrian Protection.

Pedestrian Test

Scored out of 36 points

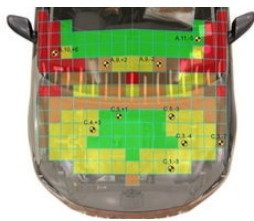
Adult & child head impacts: 14.27 points

Upper leg impacts: 6.00 points

Lower leg impacts: 6.00 points

This vehicle scored 26.27 out of 36 points (Acceptable). This vehicle performed well in the bumper and bonnet leading edge areas. Improvements could be made to the windscreen base. (v8)

Child and adult head impact



Adult leg impact (upper and full legforms)



Score Deductions.

Deductions from frontal offset test scores

Head / neck: No deductions
 Chest: No deductions
 Upper legs: No deductions
 Lower legs: No deductions

Deductions from side impact test score

Chest: No deductions

Deductions from pole test score

Head: No deductions

Safety Features & Technologies.

Descriptions of each of these safety features and safety assist technologies (SAT) and detail on fitting requirements for each star rating level can be found at ancap.com.au.

Safety Feature / Safety Assist Technology	Availability
Seat belts (three-point, lap/sash) for all forward-facing seats	S
Seat belt pretensioners (front)	S
Seat belt pretensioners (rear outboard)	X
Intelligent seat belt reminder (driver)	S
Intelligent seat belt reminder (front passenger)	S
Intelligent seat belt reminder (2 nd row seats)	S
Airbag - Frontal (driver)	S
Airbag - Frontal (passenger)	S
Airbag - Side, chest protection (front seats)	S
Airbag - Side, chest protection (2 nd row seats)	X
Airbag - Side, head protection (front seats)	S
Airbag - Side, head protection (2 nd row seats)	S
Airbag - Knee (driver)	S
Airbag - Knee (front passenger)	X
Head restraints for all seats	S
Adaptive cruise control (ACC)	V
Antilock braking system (ABS)	S
Autonomous emergency braking (AEB)	
- City	V*
- Interurban	V*
- Vulnerable road user	V*
Automatic headlights	S
Automatic high beam	X
Blind spot monitoring (BSM)	V (NZ = S)
Electronic brakeforce distribution (EBD)	S
Electronic stability control (ESC)	S
Emergency brake assist (EBA)	S
Emergency stop signal (ESS)	S
Fatigue detection	V
Lane support system (LSS)	V*
Daytime running lights (DRL)	S
Hill launch assist	S (NZ = V)
Rear cross-traffic alert (RCTA)	V (NZ = S)
Reversing collision avoidance	S
Speed assistance – automatic / intelligent speed limiting (ISA)	X
Speed assistance - manual speed limiting	X
Speed assistance - speed sign recognition / map	X
Tyre pressure monitoring system (TPMS)	S

S = Standard on all variants.

O = Optional on base variant. May be standard on higher variants.

V = Not available on base variant but standard or optional on higher variants.

X = Not available on any variant.

* = Standard on all variants built from July 2020.

These specifications are subject to change. Please check with the manufacturer for the latest specifications.

ANCAP Safety Rating

HYUNDAI i30 HATCH (April 2017 - onwards)



ANCAP

Safety ★★★★★



Injury Values & Measurements.

Body Region	Frontal offset test at 64 km/h (v5.1)		Side impact test at 50 km/h (v5.1)
	Driver	Passenger	Driver
Head			
HIC	319.00	286.00	74.00
Acceleration (g for 3ms)	46.50	42.20	
Neck			
Shear (kN)	0.56	0.39	-
Tension (kN)	1.19	0.71	-
Extension (Nm)	9.30	12.90	-
Chest			
Acceleration (g for 3ms)	-	-	-
Compression (mm)	27.82	19.20	18.00
Viscous criterion (m/s)	0.12	0.06	0.13
Abdomen			
Force (kN)	-	-	0.62
Pelvis			
Force (kN)	-	-	1.39
Upper legs			
Femur force left (kN)	0.62	0.17	
Femur force right (kN)	0.41	0.80	
Knee displacement left (mm)	0.11	0.57	
Knee displacement right (mm)	0.00	0.21	
Lower legs			
Force left (kN)	2.67	1.53	
Force right (kN)	2.91	1.82	
Index (upper / lower) left	0.66 / 0.25	0.30 / 0.22	
Index (upper / lower) right	0.46 / 0.30	0.36 / 0.32	
Intrusion Measurements*			
Steering column			
Forward (mm)	49		
Downward (mm)	3		
Sideways (mm)	10		
Pedals			
Brake - rearward (mm)	19		
Brake - upward (mm)	17		
A-Pillar			
Rearward (mm)	0		

* Steering column and pedal movements are measured relative to the driver's seat.

* **Model Variants:** ANCAP safety ratings do not automatically extend to variants that have different body styles, engine configurations, driven wheels or occupant restraint systems (e.g. fewer airbags). In these cases, ANCAP considers technical evidence submitted by manufacturers before deciding on extending a rating to additional variants of a model. For further information about the application of ANCAP safety ratings to model variants, see the ANCAP Variant Policy.

^ **Rating Year:** The Rating Year denotes the year requirements against which a vehicle has been assessed. The Rating Year is determined by ANCAP and may be based on the year in which a new vehicle model is first launched into the Australian and/or New Zealand markets; the year in which the vehicle was tested (if tested by Euro NCAP); or, for vehicles which hold an existing ANCAP safety rating, the year in which the rating was updated (or earlier applicable year).

Assessment Details.

Tested Make / Model	Hyundai Elantra
Tested Vehicle(s) Built	2016
Tested Body Type	Sedan
Tested Vehicle Kerb Weight	1290 kg
Tested Vehicle Engine	2.0 litre petrol
Tested By	ANCAP
Assessed By	ANCAP
Document Reference	I30_17
Document Created / Revised	3Apr17 / 3Jul17 / 4Jul17 / 28Mar18
Rating Published	Apr 2017 / Oct 2020 / Annual Review (2020)



Frontal offset test at 64km/h (Hyundai Elantra)